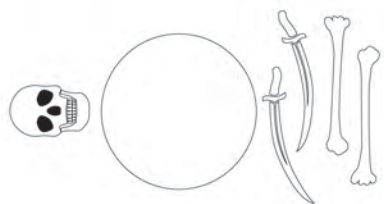




TopMark Products *How to:* PIRATE MEDALLIONS

With Apoxie Sculpt, Pinky Silicone & EasyCast.



1. Black Outline design on paper.



2. Tape face down onto clear acrylic.



3. Flip over and position on a level surface.



4. Wearing gloves, scoop 2 equal size balls of Apoxie Sculpt Clay. 1 part A, 1 part B.



5. Twist both parts together.



6. Knead thoroughly.



7. Stop when clay is a uniform colour.



8. Roll clay into small sausages and balls to form basic shapes.



9. Flatten large clay ball with rolling pin to form the medallion base.



10. Shape skull using ball tip and wire loop sculpting tools.



11. Finish teeth detail with pick tools.



12. Allow Apoxie Sculpt Clay to harden within 1-3 hours.



TopMark Products *How to:* PIRATE MEDALLIONS

With Apoxie Sculpt, Pinky Silicone & EasyCast.



13. Use wire loop tools for blending the loose balls of clay.



14. Use a ball tip tool for creating fuller down the sword blade.



15. Once set sand any uneven surface on the Medallion face.



16. Remove drawing and check for outline imperfections.



17. Roll out fingers of Klean Klay 6-10mm thick.



18. Slice strips 30mm wide.



19. Make a clay wall 10mm around sculpture. Press down clay edges to create a seal.



20. Weigh Pinky silicone 100:100 Part A:B.



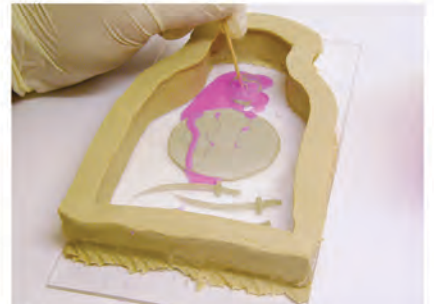
21. Pour into a larger container.



22. Mix thoroughly. Pinky silicone has only 6 mins of worktime.



23. When mixed to a uniform colour and swirl free, Pinky is ready to be applied.



24. Pour or brush a small amount of silicone into details and workout airbubbles.



TopMark Products *How to:* PIRATE MEDALLIONS

With Apoxie Sculpt, Pinky Silicone & EasyCast.



25. Pour remaining silicone from one corner until sculpture is covered by 10mm.



26. Allow to set for 30 mins on a level surface,



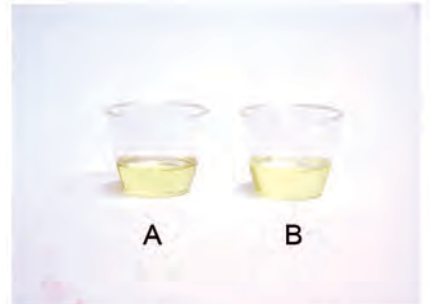
27. Remove Klean Klay and save for another project.



28. Carefully peel off silicone mold.



29. Trim feathery edges from silicone mold.



30. Measure EasyCast equal by volume.



31. Pour EasyCast A & B into a third mixing cup.



32. Stir thoroughly. EasyCast has a 2 min worktime.



33. Pour EasyCast down mixing stick to control flow.



34. Allow EasyCast to set on a level surface for 10-15 mins.



35. Trim flashing. Arrange parts and glue together with Zap-a-gap.



36. Finished EasyCast combinations 1 aged with Iron Coating.