



TopMark Products *How to:* 2PART - BLOCK MOLD

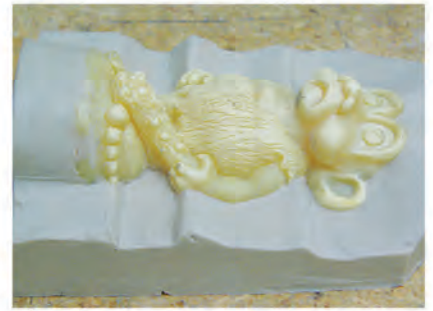
With MaxiMold Silicone and Klean Klay.



1. Model, or Master, to be cast.



2. Support Master on a Klean Klay base and tool Klean Klay into any air pockets.



3. Refine the contours to follow the horizon line of the Master.



4. Slice Klean Klay into hexagonal wedges by sculpting pyramids and trimming off the top.



5. Blend the wedges into the base to form locating keys. Place the keys evenly around the Master.



6. Make a wall of Klean Klay to contain the silicone. Blend all joins and fill all gaps.



7. Measure Maximold Silicone base on scales.



8. Measure Maximold Silicone catalyst on scales, 10% of weight of base.



9. Blend the base and catalyst thoroughly in a third container. Wear protective gloves.



10. Mix silicone until it becomes a uniform colour. MaxiMold has a 20 minute worktime.



11. Pour from one corner allowing silicone to flow around and onto Master pushing out air bubbles.



12. Fill until 10mm covers Master. Allow to set for 12 hours on a level surface away from debris.

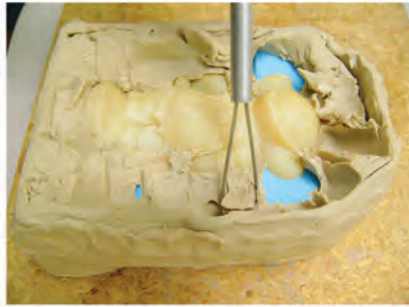


TopMark Products *How to:* 2PART - BLOCK MOLD

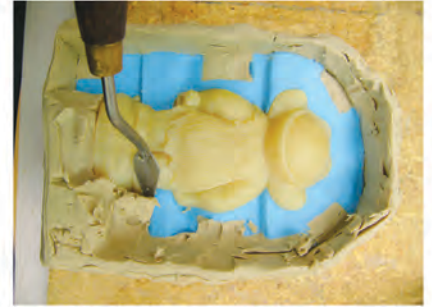
With Maximold Silicone and Klean Klay.



13. Once cured, turn over and carefully remove Klean Klay.



14. DO NOT remove Master!



15. Pick out Klean Klay wedges and resculpt the Klay pedestal under the base of the Master.



16. The first silicone side is negative, the second side makes the positive shape to key together.



17. Make another wall from Klean Klay to allow silicone to cover the pedestal.



18. Apply release agent to all exposed silicone to prevent the second side from bonding.



19. Weigh and mix second batch of MaxiMold Silicone and pour from one corner.



20. Cover Master by 10mm. Leave second batch for another 12 hours to set.



21. Once cured, remove Klean Klay and save for another project.



22. Carefully split apart mold. Allow air into the mold to break the vacuum.



23. Remove Klean Klay pedestal. Clean silicone with Iso Alcohol. 2part MaxiMold is ready to use.



24. Finished 2Part MaxiMold. Shown with the original Master.